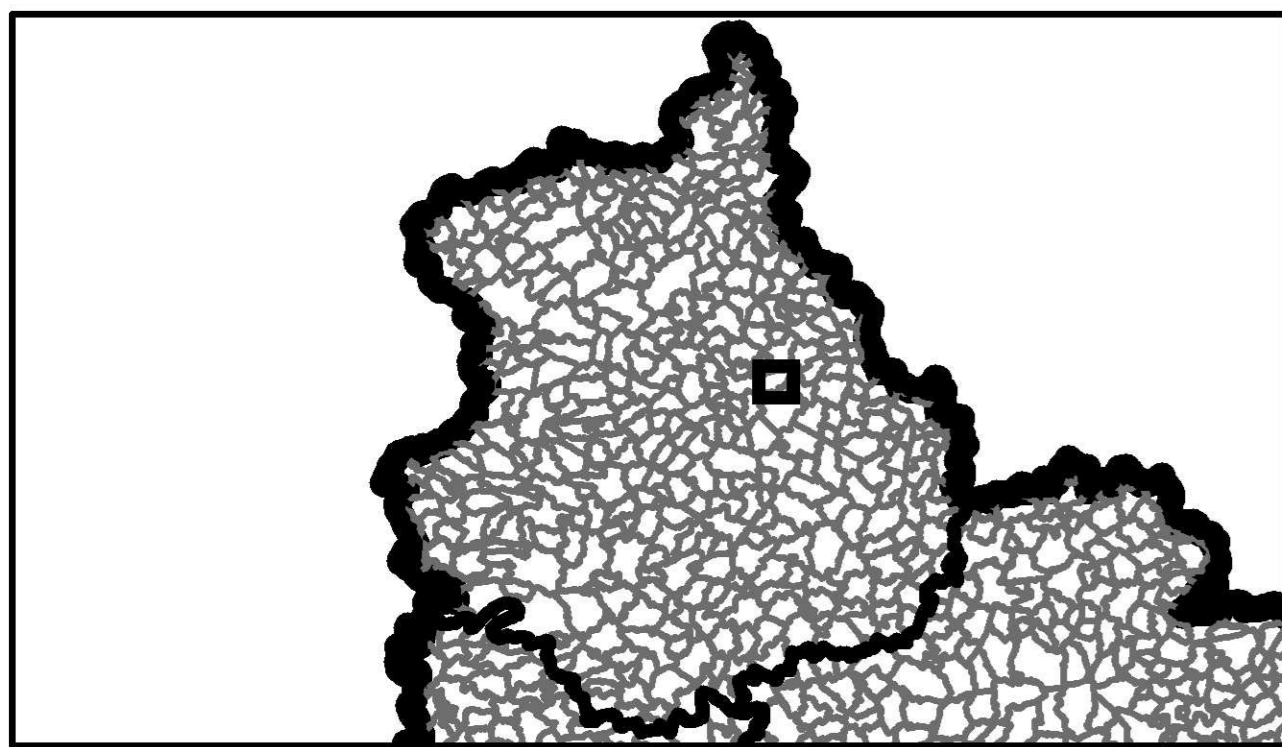











# Périmètres de protection des captages d'eau destinée à la consommation humaine

Département : Eure-et-Loir  
 Commune d'implantation :  
 NOGENT LE PHAYE



-  Protection éloignée
-  Protection rapprochée
-  Protection immédiate
-  Communes
- Captages**
-  en service
-  en projet
-  privé
-  ville de Paris
-  Réseau hydrographique



0 560Mètres

